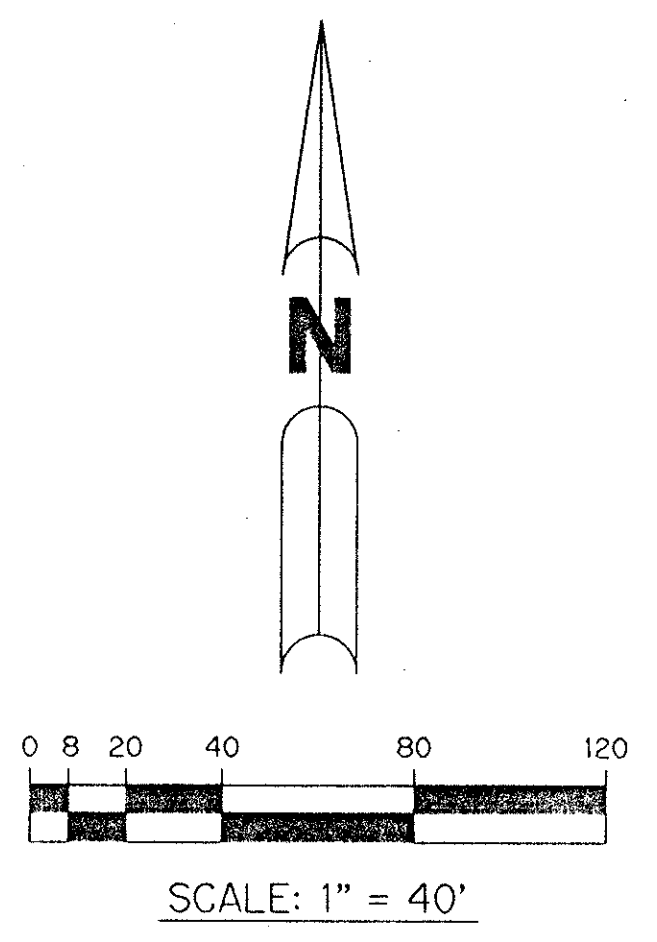


BOCA WINDS - PARCEL E

75

A PARCEL OF LAND LYING IN SECTION 22 AND 27, TOWNSHIP 47 SOUTH, RANGE 41 EAST, SAID PARCEL ALSO BEING A REPLAT OF A PORTION OF TRACTS 9, 10, 11, 14, 15 AND 16, FLORIDA FRUITLANDS COMPANY'S SUBDIVISION NO. 2, AS RECORDED IN PLAT BOOK 1, PAGE 102, PUBLIC RECORDS OF PALM BEACH COUNTY, FLORIDA.

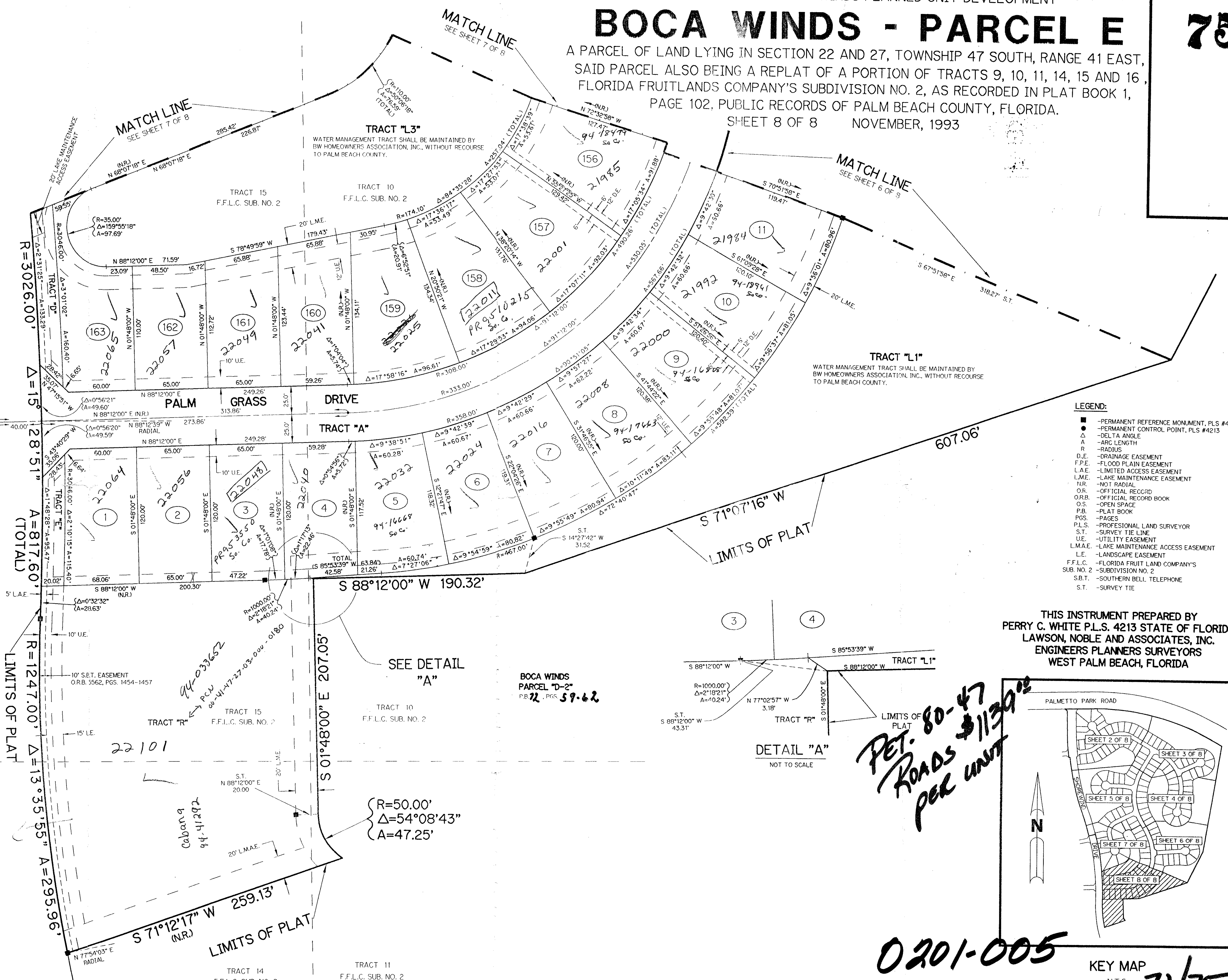
SHEET 8 OF 8 NOVEMBER, 1993



SHOREWIND DRIVE
(80' RIGHT-OF-WAY)

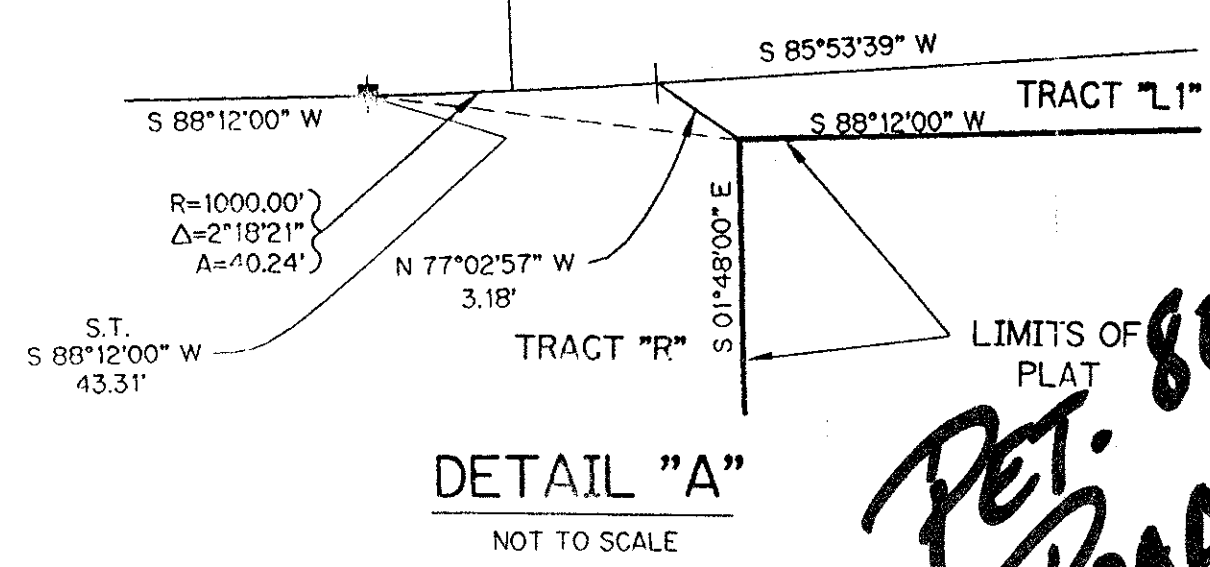
BOCA WINDS
PARCEL "E"
P.B. 58, PGS. 165-168

PARCEL E
BOCA WINDS
PAGE 75
FLOOD MAP # 1000
ZONING RT
SE 80-47
ZIP CODE 33428
PUD NAME BAY WINDS 33433

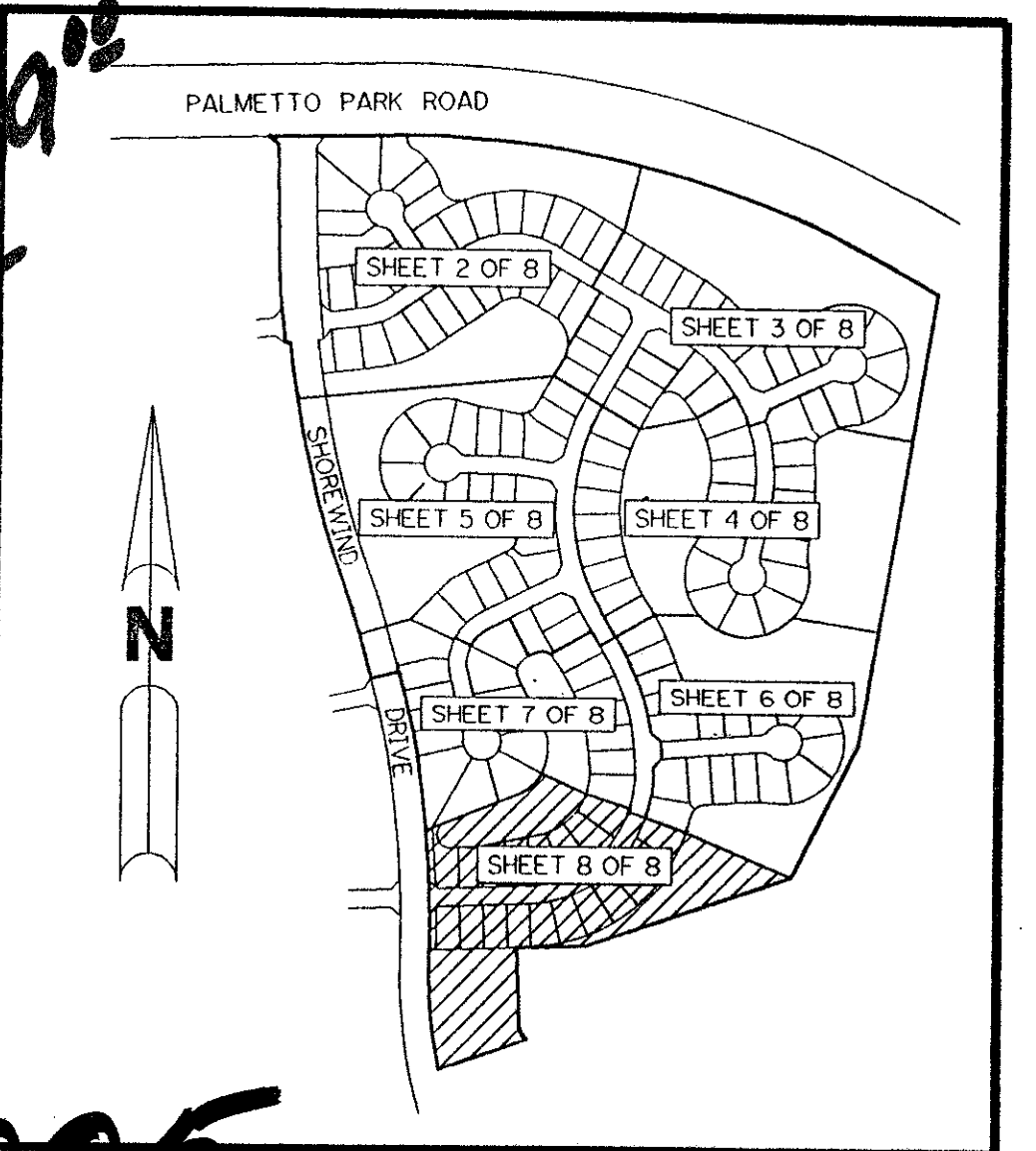


- LEGEND:**
- - PERMANENT REFERENCE MONUMENT, PLS #4213
 - - PERMANENT CONTROL POINT, PLS #4213
 - Δ - DELTA ANGLE
 - A - ARC LENGTH
 - R - RADIUS
 - D.E. - DRAINAGE EASEMENT
 - F.P.E. - FLOOD PLAIN EASEMENT
 - L.A.E. - LIMITED ACCESS EASEMENT
 - L.M.E. - LAKE MAINTENANCE EASEMENT
 - N.R. - NOT RADIAL
 - O.R. - OFFICIAL RECORD
 - O.R.B. - OFFICIAL RECORD BOOK
 - O.S. - OPEN SPACE
 - P.B. - PLAT BOOK
 - PGS. - PAGES
 - P.L.S. - PROFESSIONAL LAND SURVEYOR
 - S.T. - SURVEY TIE LINE
 - U.E. - UTILITY EASEMENT
 - L.M.A.E. - LAKE MAINTENANCE ACCESS EASEMENT
 - L.E. - LANDSCAPE EASEMENT
 - F.F.L.C. - FLORIDA FRUITLANDS COMPANY'S
 - SUB. NO. 2 - SUBDIVISION NO. 2
 - S.B.T. - SOUTHERN BELL TELEPHONE
 - S.T. - SURVEY TIE

THIS INSTRUMENT PREPARED BY
PERRY C. WHITE P.L.S. 4213 STATE OF FLORIDA
LAWSON, NOBLE AND ASSOCIATES, INC.
ENGINEERS PLANNERS SURVEYORS
WEST PALM BEACH, FLORIDA



*PET. 80-47
ROADS \$1139.00
PER UNIT*



0201-005

BOCA WINDS - PARCEL E

KEY MAP
N.T.S. 72/75
SHEET 8 OF 8